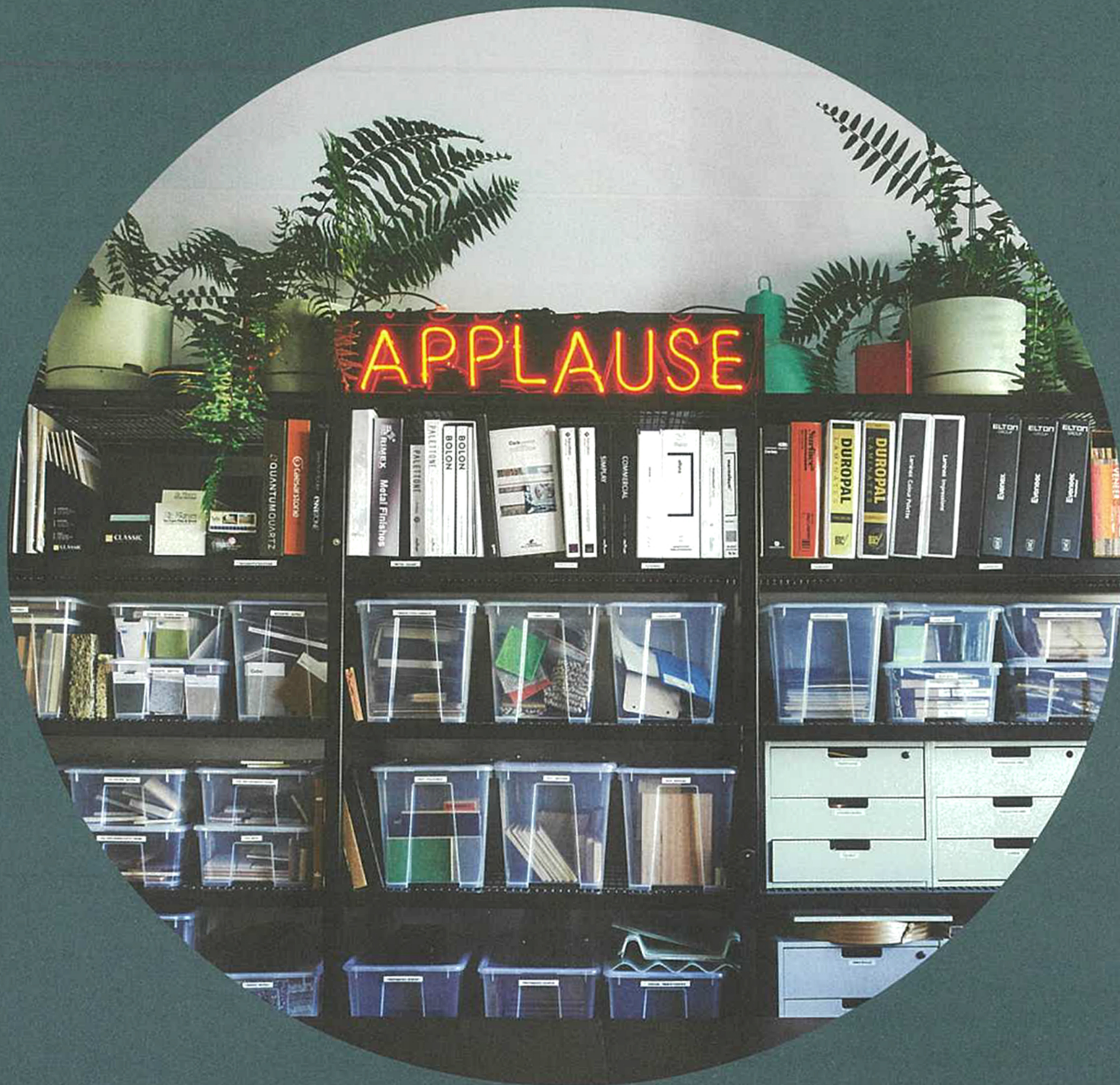


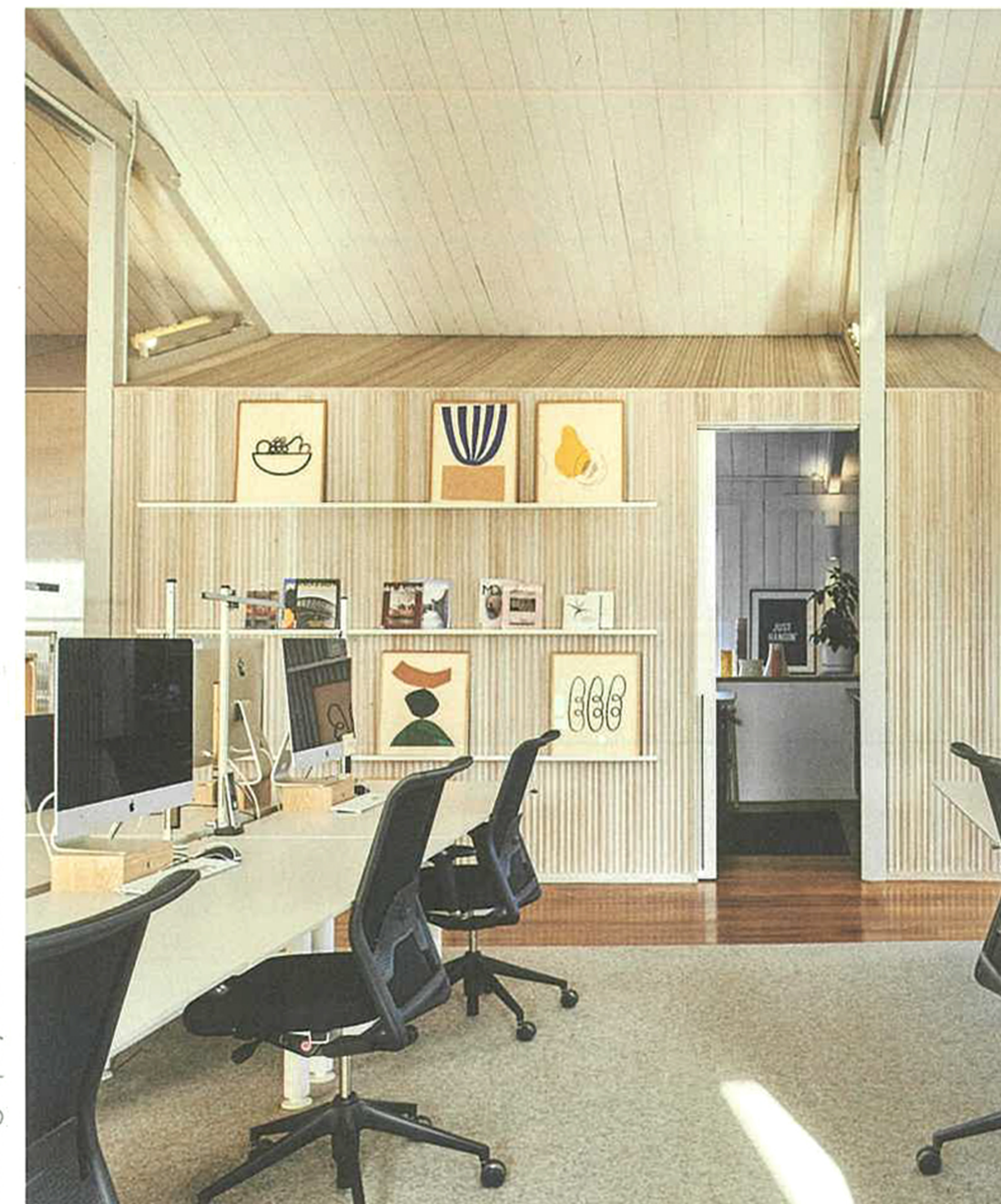
LIFE'S WORK

Where and how we work might be different these days, but the importance of a well-designed place to do so remains.

text: Georgia Thomas



Photography: Willem-Dirk Du Toit



Photography: Nicholas Wilkins

AGILE

Foolscap Studio's digs may be dubbed 'The Cloud', but its dynamism ensures that this project's feet are firmly planted on the ground. After much searching, Foolscap Studio found the perfect site in a former factory in Melbourne's artsy Collingwood; then transformed it into a creative studio and networking space catering for product design, prototyping, hospitality occasions and wellness initiatives. The interior palette is elegant, yet easygoing: headliners are timber, ample greenery and soft textiles. Elements like limewashed wall cladding by Porta, decorative lighting by ISM Objects and the studio's own custom-designed modular lounge (aka 'The Soufflé') bring plenty of character.

foolscapstudio.com.au

